



Folding Leaf Doors

Product code BFR 300

Generally constructed of a galvanized 300mm 20swg interlocking leaves with galvanized outside hinge strip & internal pickets all supported by internal lattice work.

Type bi-parting or single stack complete with a bottom channel & top track with hasp & staple locking as standard.

Specifications:- Folding Leaf Doors

Single Doors:

The single doors illustrated are bunched to the left as viewed from inside. The reverse details would apply if they were required to bunch on the right.

Bi-parting Doors:

Normally arranged to bunch equally on both sides, however, unequal bunching and opening coverage may be provided in special circumstances.

Free Moving Sections:

An additional section arranged for locking at both ends and which can bunch in any position, may be provided for some manual installations. Advice will be given on this feature when a customer's particular requirement is known.

Installation Arrangements:

1. Hung behind lintel and bunching behind the jambs of the structural opening.
2. Hung beneath lintel and bunching within structural opening.
3. Hung behind lintel and bunching within structural opening.

Dependent upon opening construction, provision may be made for a combination of the three standard arrangements or mounting a door externally.

Sizes And Types:

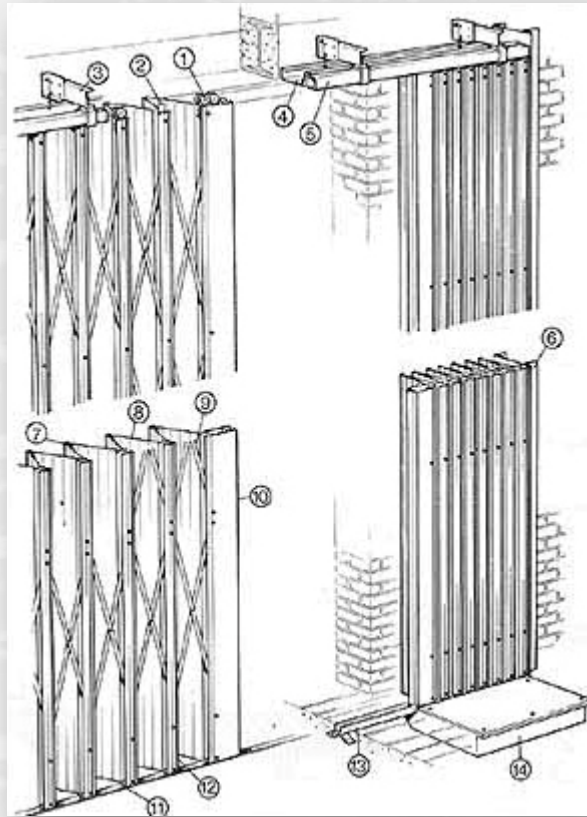
HG - for openings up to and including 5182 (17' 0") high.

HH - for openings over 5182 (17' 0") and up to and including 6095 (20' 0") high.

HI - for openings over 6095 (20' 0") and up to and including 7620 (25' 0") high.

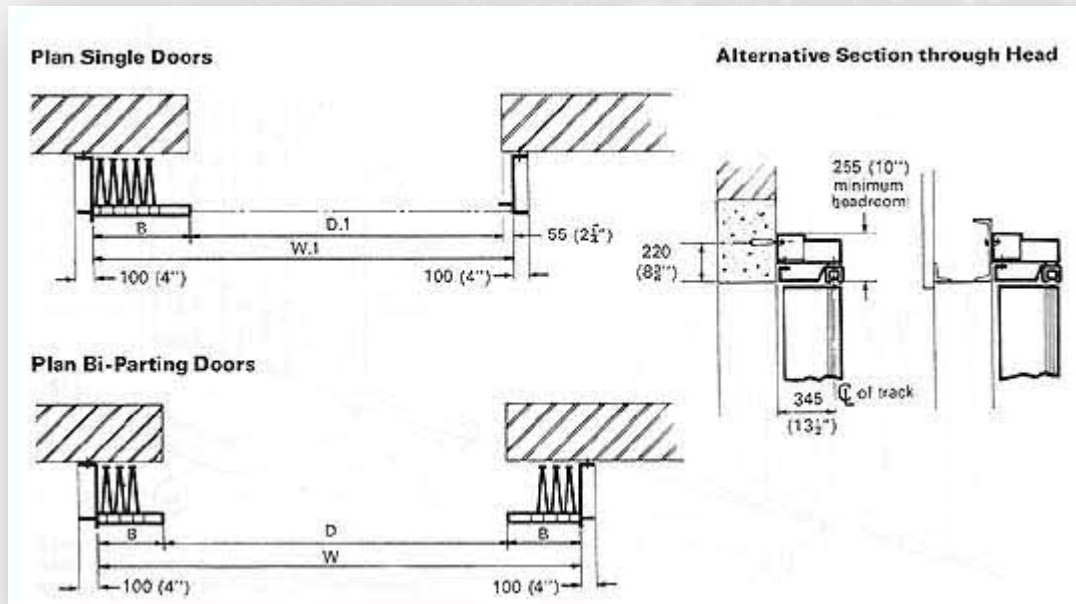
Key To Diagram :-

1. Double rollers
2. Top guides
3. Top track brackets
4. Soffit
5. Top track
6. Jamb
7. Hinge section
8. Leaves
9. Lattices
10. Lead post
11. Bottom guide spigots
12. Picket and hinge sections
13. Bottom track
14. Sump (if required)



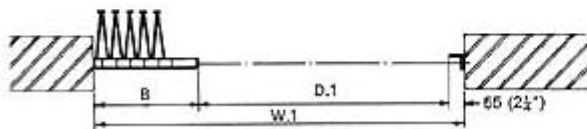
Installation Arrangements :-

The illustrations show the most popular methods of installation. Provision can be made for a combination of these arrangements together with external mounting for which we shall be pleased to provide further data when customer's requirements are known.

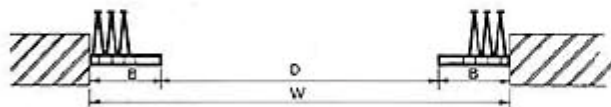


Arrangement 1 :-

Plan Single Doors

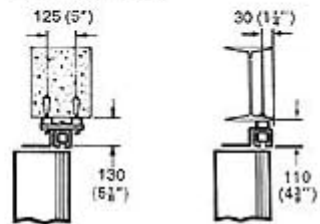


Plan Bi-Parting Doors

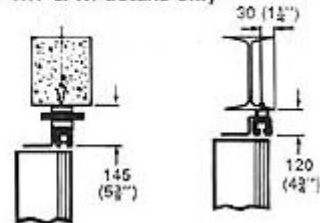


Alternative Section through Head

HG details only

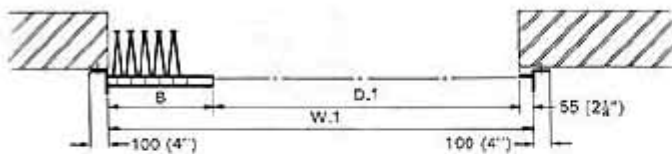


HH & HI details only

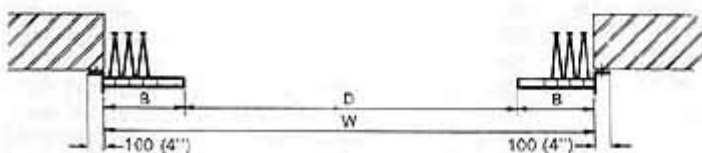


Arrangement 2 :-

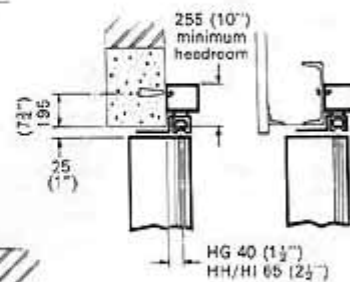
Plan Single Doors

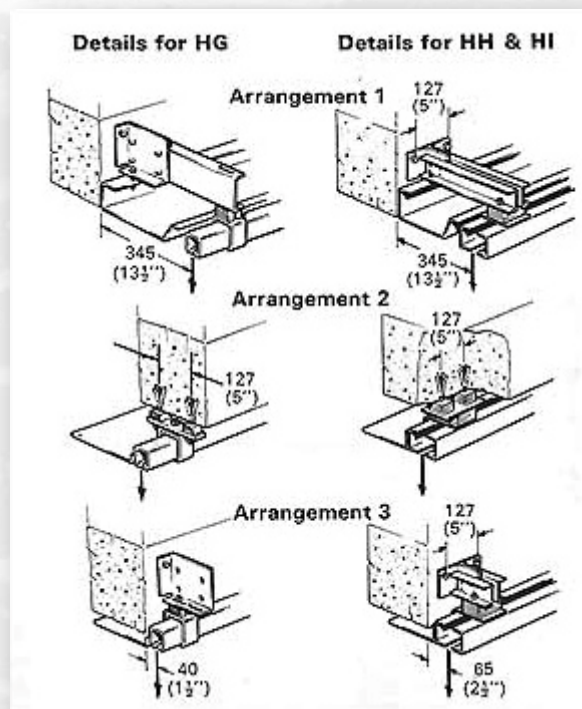


Plan Bi-Parting Doors



Alternative Section through Head



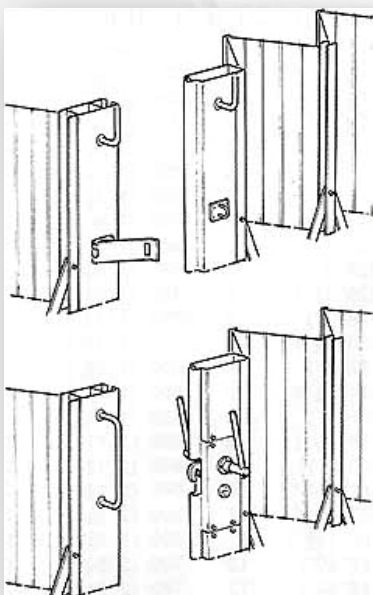


Arrangement 3 :-

Head Design:

Under the rolling load of the door, $36.6 \text{ Kg/m}^2 \times \text{door area}$, the lintel design must not permit the top track to deflect more than 13mm. Door area being height \times W1 or W.

It will be seen that the load imposed in arrangement 2 is directly below the lintel whereas with arrangement 1 the additional cantilever effect must be considered; this also applies to a lesser degree with arrangement 3. The track support brackets require a single bolt fixing for the HG, whereas for the HH and HI shutters two bolts for each bracket are required. Bracket spacing will be determined by consideration of both width and height of opening, details will be provided.



For concrete lintels 1/2"BSW through or rag bolts with 38mm thread projection should be supplied and fitted by you. For steel work we will generally require 14mm dia holes by others, however we shall be pleased to advise further upon receipt of your opening details.

Security:

Standard

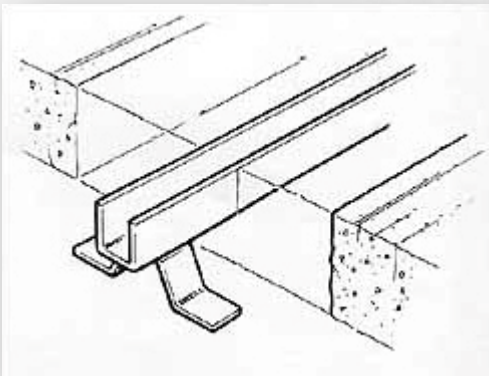
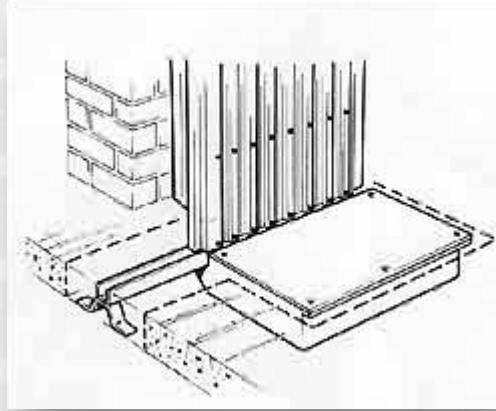
Hasp and stable padlocking facilities are fitted to the inside and outside to enable positive locking from either side. Padlock provided by you. The staples are fitted to the lead post on single doors.

Optional

An three lever deadlock system can be incorporated. Operating handles and key apertures are provided inside and outside unless otherwise requested.

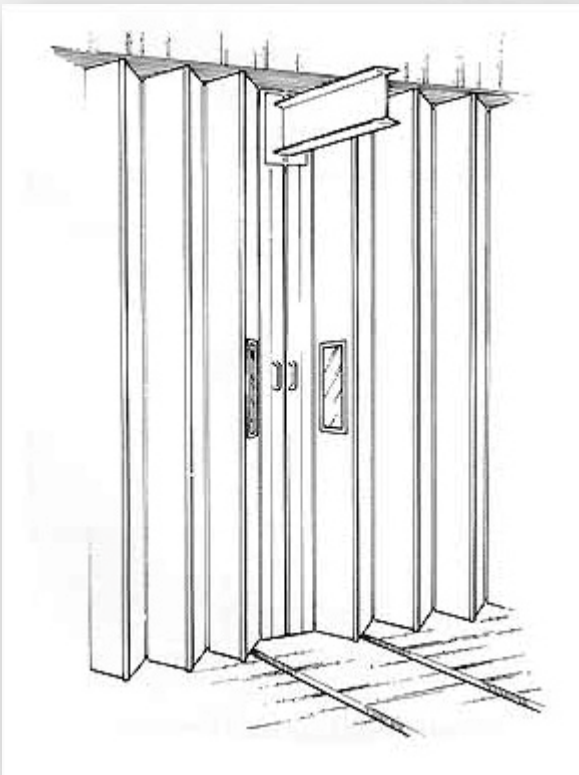
Sump:

To enable thorough cleaning of the bottom track, optional sumps can be located behind and beneath track in the bunching area. A drainage system can be coupled to the sump if it is considered that the threshold will be a water collecting area.



Floor Tracks:

An excavation 180 (7") wide x 100 (4") deep must be provided by the customer to enable our skilled erectors to locate the robust channel bottom track, subsequently to be grouted-in.



Optional Extras:

Runway Beams

Cut-outs in the standard or special extra wide lead posts can be arranged to accommodate single beams passing through bi-parting manually operated doors. Off -sets from the center line of the opening are provided by using unequal pairs of leaves each side.

Viewing Panels

Viewing panels giving a clear view area of 510 x 125 can be incorporated. Standard glazing of the 5mm toughened glass. Non-standard sizes of glazing can be considered.

Railway Lines

Special bottom tracks can be supplied where railway lines pass through the opening.